



Tennessee Timberframe
A Division of Tennessee Log Homes
2531 Decatur Pike
Albers, TN 37003
865-225-1014
800-251-4216

THE DESIGN REPRESENTED ON THIS PLAN IS INTENDED TO BE USED IN THE MANUFACTURE OF A STRUCTURE BY TENNESSEE TIMBERFRAME DIVISION OF TENNESSEE LOG HOMES AND UNDER COPYRIGHT LAW MAY NOT BE REPRODUCED FOR ANY OTHER PURPOSE WITHOUT PERMISSION BY LHM.

Customer Sign-off:

STREAMER MODEL

Job Site Location

FIRST FLOOR PLAN

Status:

- Preliminary Design
- Change per marked
- Final Design
- Production Ready
- Production
- Complete Finals

Revisions:

Date	Initials
5/27/05	csq

Date: 5/8/05

Contract # :

Sales Rep:

Drawn By: csq

Scale: 1/4" = 1'-0"

Pg. 2

WINDOW & DOOR SCHEDULE / UNITS

CODE	QTY	MODEL(ANDERSON 400 SERIES)	With R.O.	Height R.O.	COMMENTS
(A)	2	TW3052	3'-2 1/8"	5'-4 7/8"	DOUBLE HUNG SINGLE UNIT
(B)	1	TW2852-2	5'-7 15/16"	5'-4 7/8"	DOUBLE HUNG DOUBLE UNIT
(C)	1	TW2832	2'-10 1/8"	3'-4 7/8"	DOUBLE HUNG SINGLE UNIT
(D)	1	TW1842-3	5'-5 3/4"	4'-4 7/8"	DOUBLE HUNG TRIPLE UNIT
(E)	2	P3550 AN351	3'-5 3/8"	6'-9"	AWNING PICTURE OVER AWING UNIT
(F)	1	TW2856-2	5'-7 15/16"	5'-8 7/8"	DOUBLE HUNG DOUBLE UNIT
(G)	1	TW24310-2	4'-11 15/16"	4'-0 7/8"	DOUBLE HUNG DOUBLE UNIT
(H)	2	CW235	4'-9"	3'-5 3/8"	DOUBLE CASEMENT UNIT
(J)	1	DHT28111	2'-10 1/8"	2'-1 7/8"	DOUBLE HUNG TRANSOM UNIT
(K)	1	TW20210	2'-2 1/8"	3'-0 7/8"	DOUBLE HUNG SINGLE UNIT
(L)	4	CW25	4'-9"	5'-0 3/8"	DOUBLE CASEMENT UNIT
(M)	2	AP3560	4'-9"	5'-0 3/8"	AWNING PICTURE
(N)	1	TWIN ARCHTOP x 3'-2 5/8" DHP56510	5'-7 7/8"	9'-3 1/2"	SEGMENT HEAD OVER PICTURE

(1)	1	THERMA-TRU 3080	3'-2 1/2"	8'-2 1/2"	SINGLE DOOR
(2)	1	THERMA-TRU 3080 W/(2)12"SL	5'-6 1/2"	8'-2 1/2"	SINGLE DOOR W/ SIDELITES
(3)	3	THERMA-TRU 6080	6'-3 1/4"	8'-2 1/2"	DOUBLE DOOR

NOTES: THE ROUGH OPENINGS MUST BE CONFIRMED BEFORE PRODUCTION.

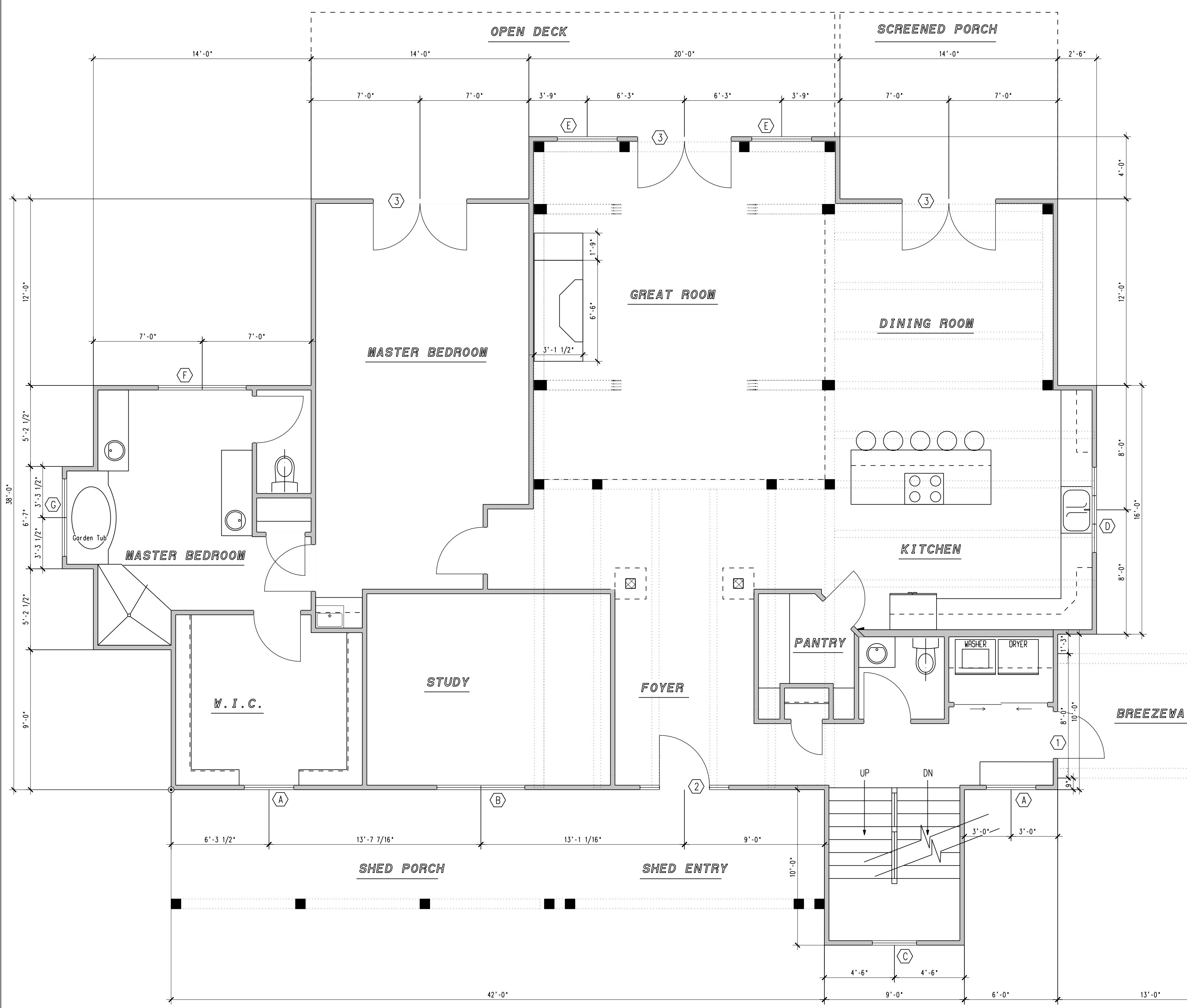
NOTES:

- WINDOWS ON THIS PLAN ARE ANDERSON 400 SERIES.
- DOORS INDICATED ON THIS PLAN ARE ANDERSON 400 SERIES.
- SPEC SHEET/ROUGH OPENINGS SHOULD BE SUPPLIED TO TENNESSEE LOG HOMES IMMEDIATELY IF STANDARD DOORS AND WINDOWS ARE NOT USED.
- VERIFY DOOR AND WINDOW LOCATIONS BY DIMENSIONS ON FLOOR PLAN.
- ALL TIMBERS ARE DOUGLAS FIR UNLESS OTHERWISE SPECIFIED.
- IT IS NECESSARY FOR ALL TENNESSEE TIMBERFRAME HOMES TO HAVE A HVAC SYSTEM THAT WILL PROVIDE PROPER VENTILATION FOR THE HOME. IT SHALL BE THE RESPONSIBILITY OF THE OWNER/CONTRACTOR TO SUPPLY PROPER VENTILATION.

DESIGN LOADS:

FLOOR: 40# LIVE LOAD; 10# DEAD LOAD
ROOF: 30# LIVE LOAD; 10# DEAD LOAD

3-CAR GARAGE
SEE GARAGE PLAN SHEETS



FIRST FLOOR PLAN

- INDICATES 8X8 OR 8X10 POSTS
- ⊠ INDICATES DECORATIVE 8X8 POSTS (MAY BE REMOVED)

WALL LEGEND

- ▨ — INDICATES R-24 EPS OSB/OSB STRUCTURAL INSULATED PANELS
- ▬ — INDICATES 2x4 WALL UNLESS OTHERWISE NOTED



Tennessee Timberframe
 A Division of Tennessee Log Homes
 2531 Decatur Pike
 Athens, TN 37023
 865-225-1014
 800-251-4216

THE DESIGN REPRESENTED ON THIS PLAN IS INTENDED TO BE USED IN THE MANUFACTURE OF A STRUCTURE BY TENNESSEE TIMBERFRAME DIVISION OF TENNESSEE LOG HOMES AND UNDER COPYRIGHT LAW MAY NOT BE REPRODUCED FOR ANY OTHER PURPOSE WITHOUT PERMISSION BY LHM.

Customer Sign-off:

STREAMER MODEL

Job Site Location

SECOND FLOOR PLAN

Status:

- Preliminary Design
- Change per marked
- Final Design
- Production Ready
- Production
- Complete Finals

Revisions:

Date initials
 Date initials
 Date initials
 Date initials
 Date initials
 Date initials

Date: 5/21/05

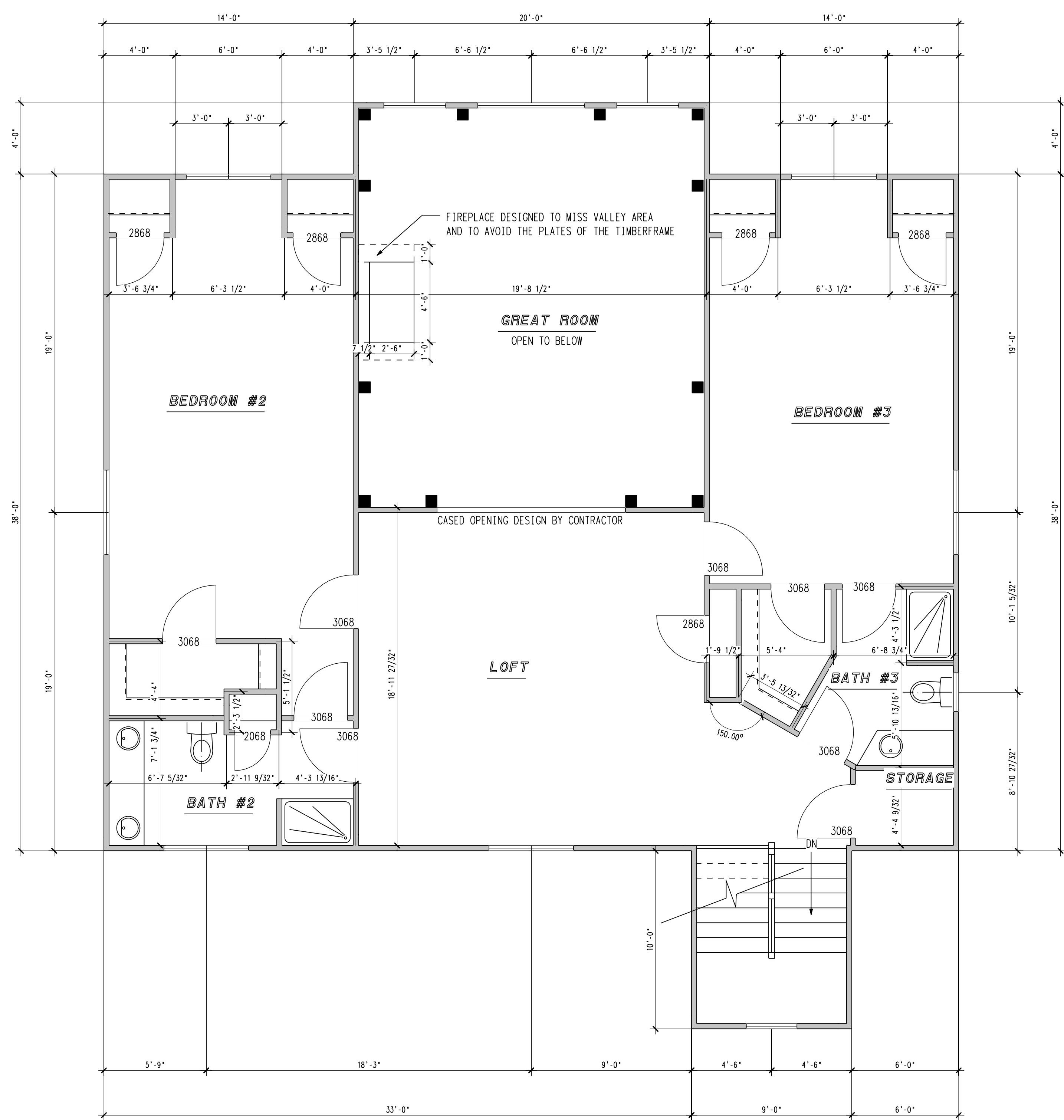
Contract # :

Sales Rep:

Drawn By: csg

Scale: 1/4" = 1'-0"

Pg. 3



SECOND FLOOR PLAN

WINDOW & DOOR SCHEDULE / UNITS					
CODE	QTY	MODEL(ANDERSON 400 SERIES)	With R.O.	Height R.O.	COMMENTS
(A)	2	TW3052	3'-2 1/8"	5'-4 7/8"	DOUBLE HUNG SINGLE UNIT
(B)	1	TW2852-2	5'-7 15/16"	5'-4 7/8"	DOUBLE HUNG DOUBLE UNIT
(C)	1	TW2832	2'-10 1/8"	3'-4 7/8"	DOUBLE HUNG SINGLE UNIT
(D)	1	TW1842-3	5'-5 3/4"	4'-4 7/8"	DOUBLE HUNG TRIPLE UNIT
(E)	2	P3550 AN351	3'-5 3/8"	6'-9"	AWNING PICTURE OVER AWING UNIT
(F)	1	TW2856-2	5'-7 15/16"	5'-8 7/8"	DOUBLE HUNG DOUBLE UNIT
(G)	1	TW24310-2	4'-11 15/16"	4'-0 7/8"	DOUBLE HUNG DOUBLE UNIT
(H)	2	CW235	4'-9"	3'-5 3/8"	DOUBLE CASEMENT UNIT
(J)	1	DHT28111	2'-10 1/8"	2'-1 7/8"	DOUBLE HUNG TRANSOM UNIT
(K)	1	TW20210	2'-2 1/8"	3'-0 7/8"	DOUBLE HUNG SINGLE UNIT
(L)	4	CW25	4'-9"	5'-0 3/8"	DOUBLE CASEMENT UNIT
(M)	2	AP3560	4'-9"	5'-0 3/8"	AWNING PICTURE
(N)	1	TWIN ARCHTOP x 3'-2 5/8" DHP56510	5'-7 7/8"	9'-3 1/2"	SEGMENT HEAD OVER PICTURE

(1)	1	THERMA-TRU 3080	3'-2 1/2"	8'-2 1/2"	SINGLE DOOR
(2)	1	THERMA-TRU 3080 W/(2)12"SL	5'-6 1/2"	8'-2 1/2"	SINGLE DOOR W/ SIDELITES
(3)	3	THERMA-TRU 6080	6'-3 1/4"	8'-2 1/2"	DOUBLE DOOR

NOTES: THE ROUGH OPENINGS MUST BE CONFIRMED BEFORE PRODUCTION.

WALL LEGEND

- INDICATES R-24 EPS OSB/OSB STRUCTURAL INSULATED PANELS
- INDICATES 2x4 WALL UNLESS OTHERWISE NOTED

NOTES:

- WINDOWS ON THIS PLAN ARE ANDERSON 400 SERIES.
- DOORS INDICATED ON THIS PLAN ARE ANDERSON 400 SERIES.
- SPEC SHEET/ROUGH OPENINGS SHOULD BE SUPPLIED TO TENNESSEE LOG HOMES IMMEDIATELY IF STANDARD DOORS AND WINDOWS ARE NOT USED.
- VERIFY DOOR AND WINDOW LOCATIONS BY DIMENSIONS ON FLOOR PLAN.
- ALL TIMBERS ARE DOUGLAS FIR UNLESS OTHERWISE SPECIFIED.
- IT IS NECESSARY FOR ALL TENNESSEE TIMBERFRAME HOMES TO HAVE A HVAC SYSTEM THAT WILL PROVIDE PROPER VENTILATION FOR THE HOME. IT SHALL BE THE RESPONSIBILITY OF THE OWNER/CONTRACTOR TO SUPPLY PROPER VENTILATION.

DESIGN LOADS:

FLOOR: 40# LIVE LOAD; 10# DEAD LOAD
 ROOF: 30# LIVE LOAD; 10# DEAD LOAD